

PATHWAY TO CRIP

Issue 4, 11/2009

Getting to CRIP

Flying: The hotel is 20 miles from either Love Field (Southwest Hub) or Dallas Fort Worth Airport.

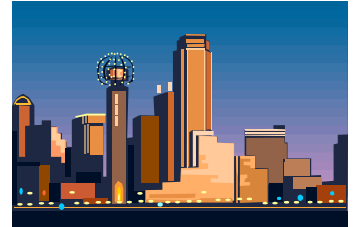
Embassy Suites is not an airport hotel and does not provide transportation to or from the airport. You have several options for transportation to and from the hotel:

1. **Airport Shuttle Services:** a shared shuttle is an economical way to get from the airport to the hotel, but may take as much as two hours before arrival at the hotel. The Go Yellow Checker Shuttle is \$34 one way, which is less than the Super Shuttle; the price goes down for multiple people traveling together.
2. **Car Rental:** Preferred transportation for Interview Teams of two or more. The hotel is a direct 25-30 minute drive either airport. Contact the hotel for specific directions.
3. **Taxi:** Taxi service to the hotel is very expensive, more than \$60 one way, although sharing a taxi could help cut down on cost.

Parking: Limited Outdoor Parking - Free
Covered Self-Parking - \$8 per day
Valet Parking - \$14 per day

NEWSLETTER SPOTLIGHT

All hotel reservations, changes or cancellations must be made through the CASPR/CRIP staff. Confirm your date of departure upon check-in to avoid early checkout fees. Contact CRIP staff on-site with any concerns.



Talking Numbers – Applicants vs. Available Positions

Having sufficient entry level positions for the graduating seniors has been a topic of concern for a while. Currently, there are 502 seniors applying for residency through CASPR and an additional 20 previous graduates. There are 464 entry level positions being offered through CASPR by 213 residency programs.

Although the gap is obvious, we do anticipate being able to place all students who qualify for a position, especially with your help. Several additional programs are being reviewed by CPME and more new programs are anticipated. Many programs that were offered the increase of position by CPME have verbally committed but have not finalized the increase yet. If you have not confirmed or declined the offer from CPME to increase positions, please do so as soon as possible. We do still need the positions if you are able to increase.

It is important to keep the numbers in mind as we approach CRIP. The students will be feeling a great deal of stress and tension levels will be high with the competition for positions. Maintaining the highest standards in interviewing will assist them by not adding additional pressure and enable them to do their best and present themselves well.

Interviewing and Technology



Staff is currently working with the hotel to determine the possibility of connecting a laptop with a flat-screen TV. If your program requires students to read x-rays or charts as part of the interview process, there may be a limited number of suites with flat-screen TVs that have this capability. If you would like a suite with one of these TVs in it, please send an email to mcarmony@aacpm.org. One suite per program. Please allow for an alternative approach or the limitation to your laptop screen as a backup plan in case technological restrictions will not allow the enhancement to happen. Suites will be assigned by CRIP staff to make the most efficient use of interview times.